



TURN-KEY AUTO BODY SHOP FOR SALE

5008 Leavenworth Road, Kansas City, Kansas



SALE PRICE: \$585,000 | 7,733 SF ON 0.41 ACRE

DEMOGRAPHICS

	1 mile	3 miles	5 miles
Estimated Population	6,904	44,894	119,800
Avg. Household Income	\$72,263	\$73,192	\$83,162

- Turn-Key Collision/Auto Body Shop
- Separate Renovated Office/Residential Building Included
- 8 overhead doors (Including a single 18ft door)
- Secure Gated Lot
- Located in the KCK Automotive Corridor
- Equipment: Paint Booth, Automated Paint Mixer, One Rotary Lift, Frame Machine, and more
- [Click Here to View 360° Tour](#)



CLICK HERE TO VIEW MORE LISTING INFORMATION

For More Information Contact:

Exclusive Agents

WILL SANDERS | 816.412.7307 | wsanders@blockandco.com

COLTIN DIEHL | 816.412.7303 | cdiehl@blockandco.com

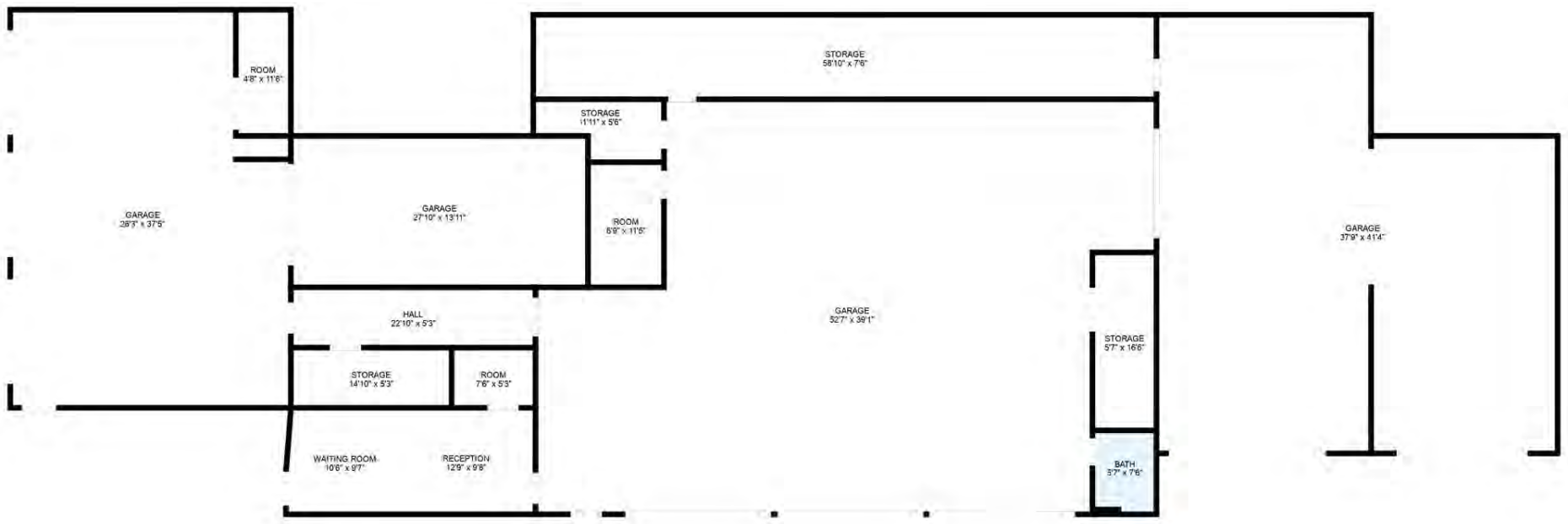
GRANT SUMMERS | 816.412.7303 | gsummers@blockandco.com



TURN-KEY AUTO BODY SHOP FOR SALE

5008 Leavenworth Road, Kansas City, Kansas

FLOOR PLAN



PHOTOS





TURN-KEY AUTO BODY SHOP FOR SALE

5008 Leavenworth Road, Kansas City, Kansas

EQUIPMENT LIST

Equipment Included (House / Shop)

- Security System: Hard-wired, fully integrated premier security system with cameras, monitors, and full property surveillance
- Air Compressor: 380-gallon capacity

Paint Mix Systems:

- Water paint mix system
- Solvent paint mix system
- Paint mixing computer and software (in each mixing room)
- Expansive paint supplies (in each mixing room)

Automotive Repair Equipment:

- Balancer
- Sand blast cabinet
- Duzmor auto collision repair system and frame machine

Office Furniture:

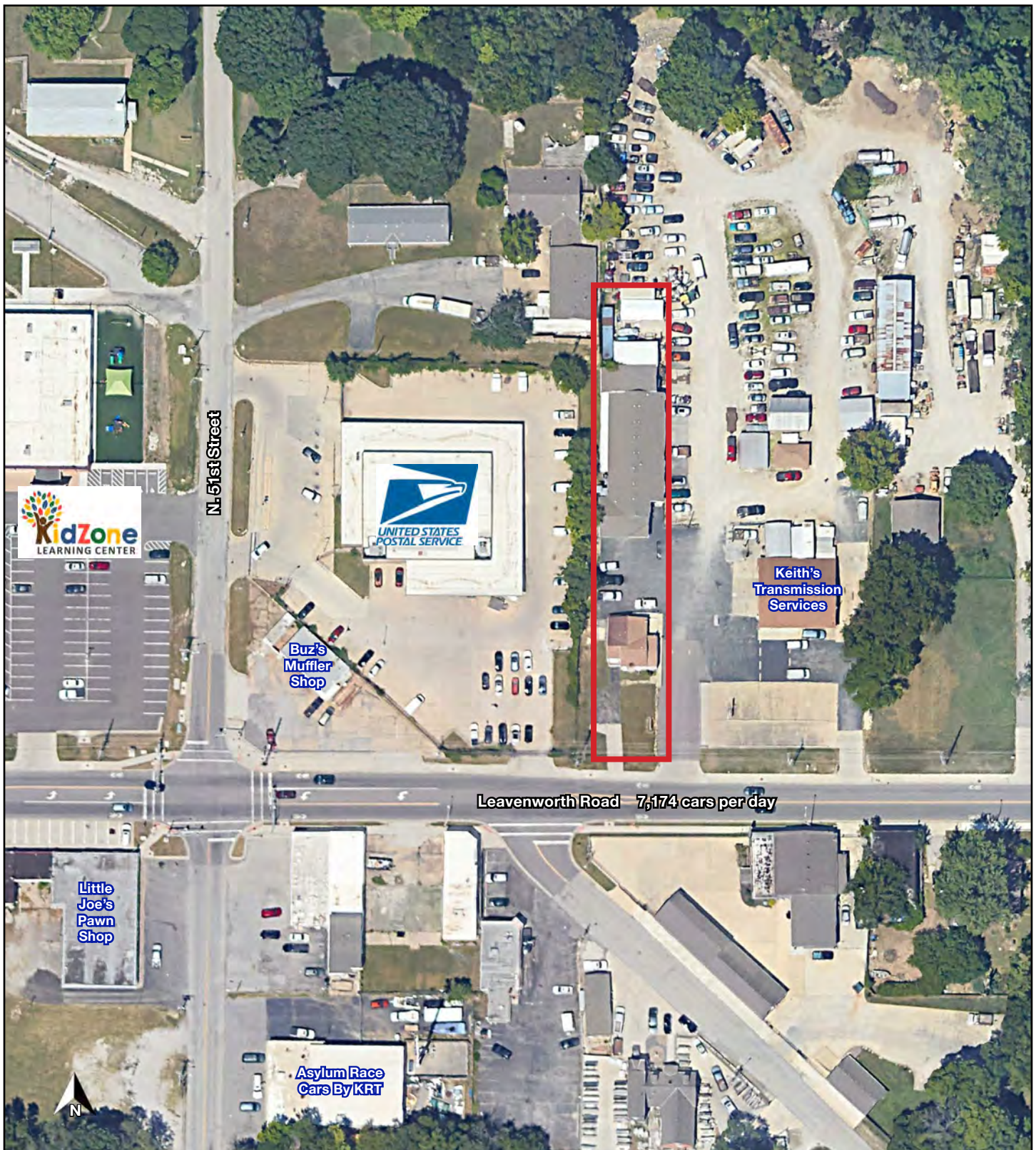
- Reception chairs
- High-top tables
- Desk chairs
- Computers
- Printers
- Desks

(further inclusions to be specified upon request)

TURN-KEY AUTO BODY SHOP FOR SALE

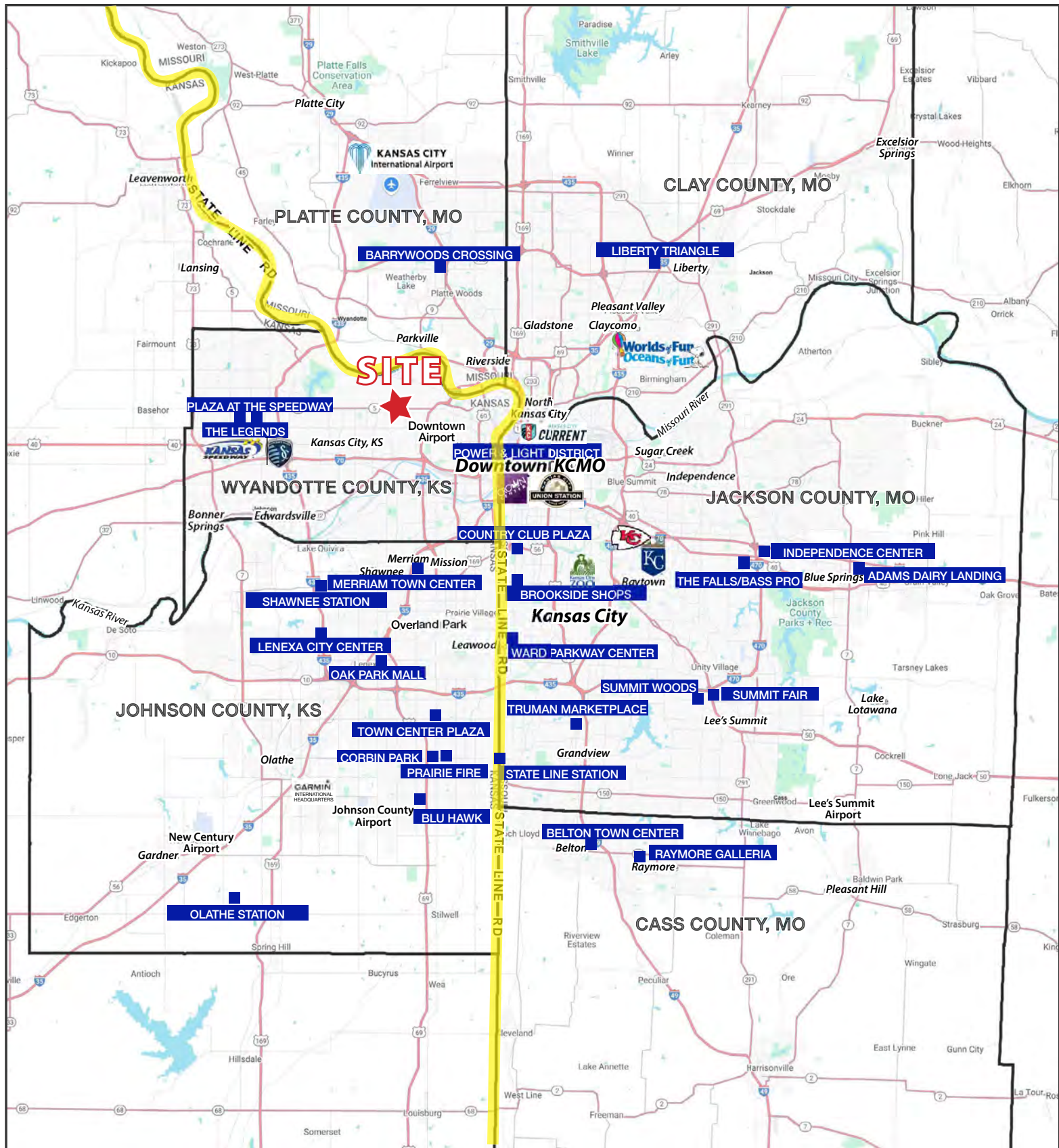
5008 Leavenworth Road, Kansas City, Kansas

AERIAL



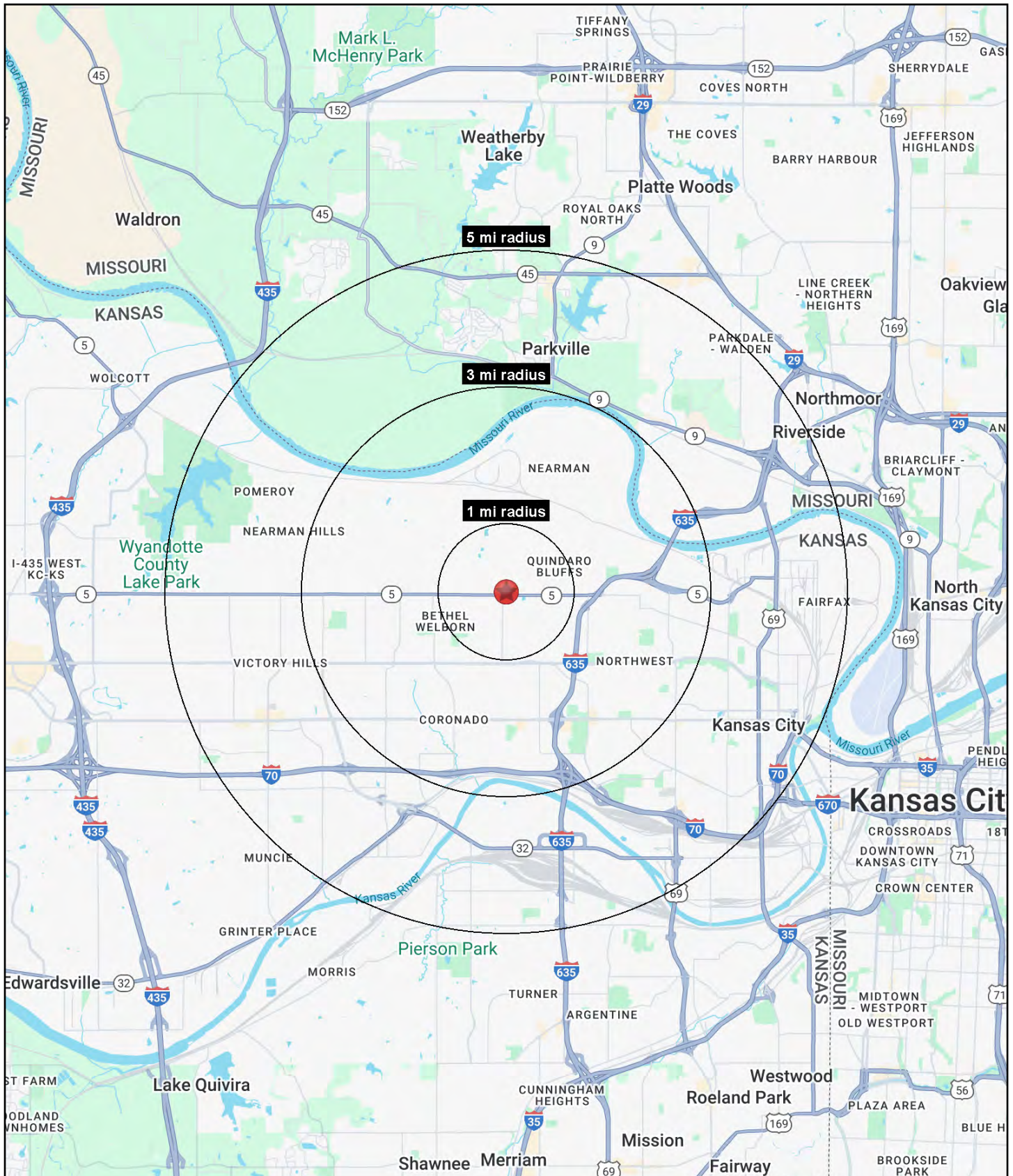
TURN-KEY AUTO BODY SHOP FOR SALE

5008 Leavenworth Road, Kansas City, Kansas



TURN-KEY AUTO BODY SHOP FOR SALE

5008 Leavenworth Road, Kansas City, Kansas





TURN-KEY AUTO BODY SHOP FOR SALE

5008 Leavenworth Road, Kansas City, Kansas

5008 Leavenworth Road Kansas City, KS 66104	1 mi radius	3 mi radius	5 mi radius
Population			
2025 Estimated Population	6,904	44,894	119,800
2030 Projected Population	6,742	44,056	118,719
2020 Census Population	6,739	42,400	115,919
2010 Census Population	6,646	41,503	109,017
Projected Annual Growth 2025 to 2030	-0.5%	-0.4%	-0.2%
Historical Annual Growth 2010 to 2025	0.3%	0.5%	0.7%
2025 Median Age	34.6	32.8	33.6
Households			
2025 Estimated Households	2,470	15,646	42,902
2030 Projected Households	2,424	15,438	42,963
2020 Census Households	2,503	15,410	41,785
2010 Census Households	2,472	15,089	39,863
Projected Annual Growth 2025 to 2030	-0.4%	-0.3%	-
Historical Annual Growth 2010 to 2025	-	0.2%	0.5%
Race and Ethnicity			
2025 Estimated White	37.4%	32.9%	42.2%
2025 Estimated Black or African American	28.3%	29.9%	23.6%
2025 Estimated Asian or Pacific Islander	8.8%	7.4%	6.5%
2025 Estimated American Indian or Native Alaskan	0.9%	1.0%	0.9%
2025 Estimated Other Races	24.6%	28.7%	26.8%
2025 Estimated Hispanic	29.8%	34.8%	32.4%
Income			
2025 Estimated Average Household Income	\$72,263	\$73,192	\$83,162
2025 Estimated Median Household Income	\$57,952	\$59,751	\$65,262
2025 Estimated Per Capita Income	\$25,876	\$25,578	\$29,940
Education (Age 25+)			
2025 Estimated Elementary (Grade Level 0 to 8)	11.2%	11.4%	10.0%
2025 Estimated Some High School (Grade Level 9 to 11)	6.6%	10.7%	9.7%
2025 Estimated High School Graduate	31.3%	31.5%	29.3%
2025 Estimated Some College	24.8%	22.1%	20.8%
2025 Estimated Associates Degree Only	7.1%	9.4%	8.3%
2025 Estimated Bachelors Degree Only	12.2%	9.6%	13.9%
2025 Estimated Graduate Degree	6.8%	5.3%	8.1%
Business			
2025 Estimated Total Businesses	66	607	3,101
2025 Estimated Total Employees	527	9,123	52,095
2025 Estimated Employee Population per Business	8.0	15.0	16.8
2025 Estimated Residential Population per Business	104.7	73.9	38.6

©2025, Sites USA, Chandler, Arizona, 480-491-1112 Demographic Source: Applied Geographic Solutions 5/2025, TIGER Geography - RS1